

# BOXESMOTO RACING TEAM

team presentation



Benaguacil Valencia 46180  
C/Rambleta nº2  
tel: +34 96 273 76 61

107497, Moscow  
Amurskaya str, h. 17  
tel: +7-925-682-47-33

[info@bm-race.com](mailto:info@bm-race.com)  
[bm-race.com](http://bm-race.com)



Dear friends!

Let us introduce ourselves. We are Alexander and Noel. We met in 2014 thanks to our common interest in motorsport, repairing of motorcycles and our passion to improve the results in races.

In 2016 we formed a team with our repair workshop as the base. Now we help riders to get better results on the tracks and in the schools of Spain throughout the whole year.

We want to help Russian speaking and foreign riders in order to take them to the professional level. Our philosophy is to be the most professional and the best technically equipped team in Russian motorsport, using all the professional racing know-how for races.

It's very difficult to put in a few words all the emotion and effort we devote to this sport, the overwhelming joy to see our racers' triumph, the happiness of just a few minutes of the race and the fatigue after countless training hours. For us, races are the style of life. Everything we do is somehow connected to our desire to be a part of motorsport!

**BOXESMOTO RACING TEAM**



**BOXESMOTO**  
racing team

bm-race.com

[info@bm-race.com](mailto:info@bm-race.com)

+7-925-682-47-33

# THE TEAM

The motorcycle racing team was created by Alexander Shein and Noel Tarin. Our aim to constantly improve technical and organizational procedures and we have the access to the best know-how in the area of motorcycle racing. This can help us set up a process similar to that of professional teams of the best world championships

## ALEXANDER

Russian side

*Boxesmoto founder,  
design engineer of  
the team*



- Since 2007 has taken part in the track days in France, Spain, Germany, Russia, USA, as well as in the professional championships and Moscow region Governor's Motorcycle Race Cups of 2015 and 2016
- Multiple prize winner of RSBC, TRD and Speer circuits
- CALIFORNIA SUPERBIKE SCHOOL (USA) graduate
- BMW RACE ACADEMY (NL) graduate
- KSB Elite (ES) graduate
- Currently studying *Motorsport Engineering* at the engineering school REPSOL MONLAU TECHNICAL SCHOOL (Barcelona)

## NOEL

Spanish side

*Technical support and  
repairing of motorcycles,  
spare parts provision*



- BOXESMOTO COMPETITION motorcycle workshop manager, in charge of the technical maintenance department
- Rider of FIM road racing since 2009 and motocross since 2011
- Graduated and certified by *OHLINS* school
- OHLINS and FG GUBELLINI authorized dealer and certified suspension engineer



**BOXESMOTO**  
racing team

bm-race.com

[info@bm-race.com](mailto:info@bm-race.com)

+7-925-682-47-33

# CONCEPT

Our idea is to introduce the newest motorsport development in teams of the national level. We also train Russian speaking and foreign riders on the basis of professional training programs in Spain, a country of an accessible and developed service for motorcycle race riders

## How are we different from other teams?

- Emphasis on **technical and engineering improvement** of motorcycles (not just tuning)
- Concept of riders' development through
  - Motor schools of Spain
  - Mandatory analysis of the telemetry after the race
- **Structured** professional approach to **organizational** procedure
  - **Turnkey** organization, includes visas, transportation and preparation of the motorcycles
  - Notice of races to riders
  - Preliminary estimation of the budget of the race (before the start of the event). Daily update of the expenses information.
  - After the race – team report of the event, drivers report on the rider's telemetry analysis, technical report on the motorcycle's conditions, list of necessary spare parts
- **Close contacts with all kinds of services in Spain**
  - Suppliers of spare parts and equipment
  - Organizers of track days and championships
  - Motor schools and mini training sessions in pit bikes and karting circuits
- **International concept** – we speak four languages and we deal with logistics for riders all over Europe and CIS. We see to it that the language barrier is no longer a problem for racers
- **Our own base** in Russia and Spain. Motorcycle workshop and storage garage



**BOXESMOTO**  
racing team

bm-race.com

[info@bm-race.com](mailto:info@bm-race.com)

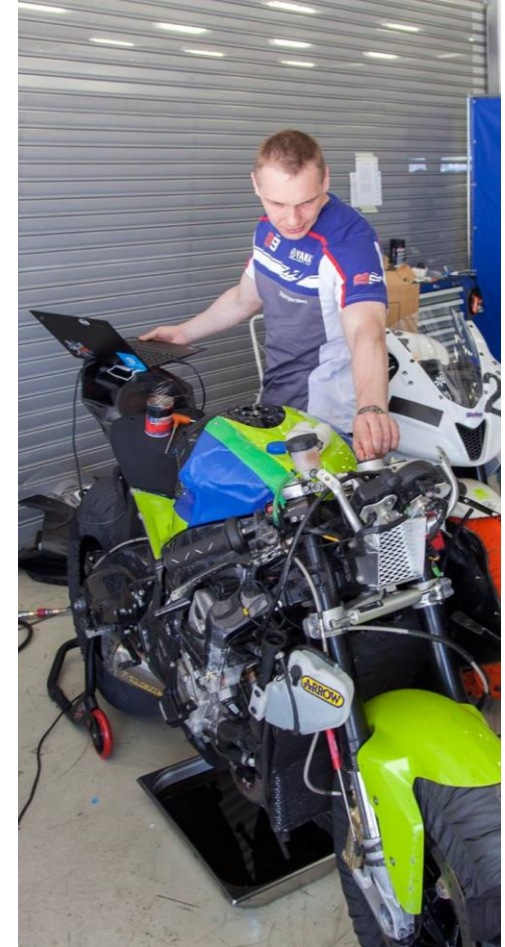
+7-925-682-47-33

# EQUIPMENT

We love the motorcycle BMW S1000RR for its reliability, perfect reparability, wonderful and complex electronics, that allows the adjustment of the motorcycle's performance. For our clients we always have KAWASAKI Ninja ZX-6X for rent. The motorcycles are always clean, well painted and look good in photos



**Engine:** standard with BMW Calibration Kit 3.0  
**Suspension:** cartridge Ohlins FGK or FG Gubellini  
**Fairing:** ITR  
**Clipons, footpegs:** valtermoto  
**Breaks:** brembo  
**Wheels:** standard discs, tires casing Pirelli SuperCorsa  
**Exhaust system:** full exhaust Arrow or Akrapovic  
**Tool set:** Ohlins and Bikemaster, AlphaRacing  
**Chassis elements** (subframe, fairing bracket): Alpharacing  
**Telemetry:** 2D with extension box and additional suspension and lambda sensors  
**Other electronics:** Alpharacing (boards, quickshifter)



**BOXESMOTO**  
racing team

bm-race.com  
[info@bm-race.com](mailto:info@bm-race.com)  
+7-925-682-47-33

# TECHNICAL DEPARTMENT

We offer full-blown mechanical service at the national level using latest technics in maintenance and tuning

Technical preparation and tuning of the motorcycle is paramount part in preparation for the serious races. Being as important as pilot preparation this is an area where team could get these seconds to reduce the lap time. Our team is completely autonomous and is able to provide full range of the services for motorcycles preparation

- Motorcycle workshop for mechanical tuning and maintenance
- Suspension tuning (Ohlins official service)
- Telemetry installation and analysis (2D, AIM)
- Electronics modification (ECU): injection maps change, ignition timing, other ride-by-wire parameters
- Dyno stand services: power measurement and enhance



**BOXESMOTO**  
racing team

bm-race.com

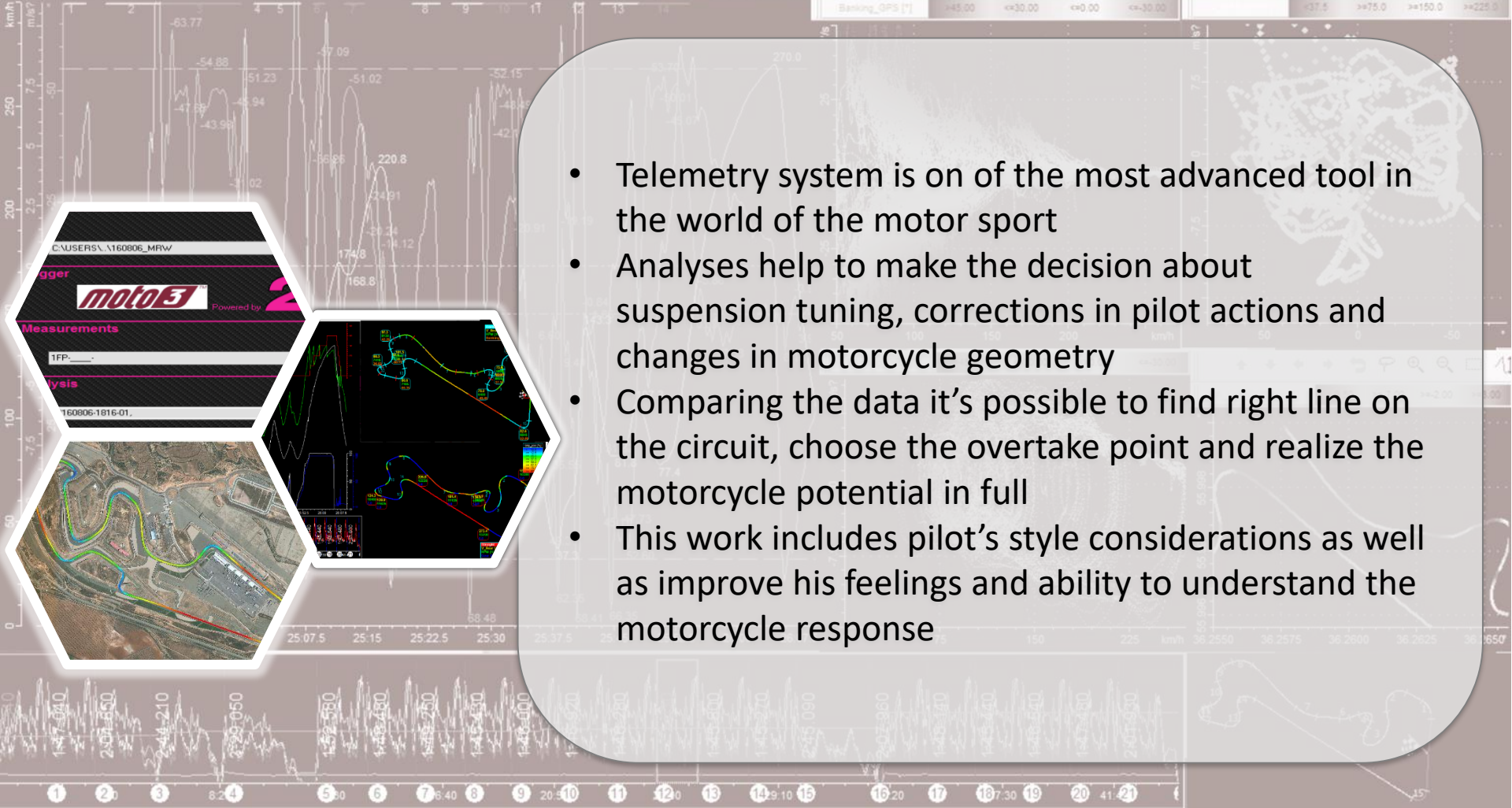
[info@bm-race.com](mailto:info@bm-race.com)

+7-925-682-47-33

# SPORT ENGINEERING

There is no magic in how to decrease lap time it's science. It's necessary to obtain information about motorcycle's and pilot's behavior in each point of the circuit. The information needs to be analyzed and conclusions to be prepared. That's why you need sport engineers

- Telemetry system is one of the most advanced tools in the world of the motor sport
- Analyses help to make the decision about suspension tuning, corrections in pilot actions and changes in motorcycle geometry
- Comparing the data it's possible to find right line on the circuit, choose the overtake point and realize the motorcycle potential in full
- This work includes pilot's style considerations as well as improve his feelings and ability to understand the motorcycle response



# MOTORCYCLE POTENCY INCREASING

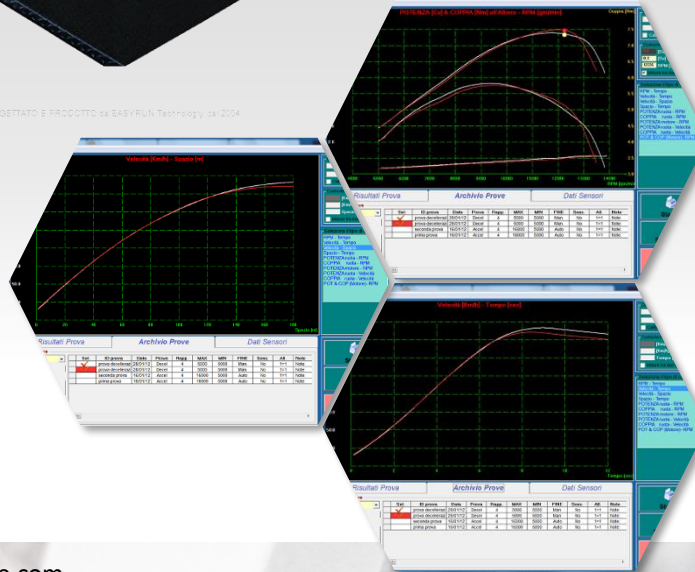
Let's squeeze your bike at maximum! We our dynostand we're creating maps of injection and timing especially tailored for your motorbike. Using additional RapidBike electronics we could work with any sportbike adding newest electronic systems in it

## DYNOSTAND



LABORAZIONE PROGETTATO E PRODOTTO DA SAS/RUN Technology, s.r.l. 2004

- New design 2017
- **Additional fan** to emulate air flow on the speed
- Ideal for **sportbikes** with 600 and 1000cc



## RAPIDBIKE



- For any motorcycle this additional module allows
- To modify **injection and timing maps**
  - To add and tune **traction control**
  - To setup Pit-lane limiter
  - To add **engine brake**
  - To add **Launch control**



**BOXESMOTO**  
racing team

bm-race.com  
[info@bm-race.com](mailto:info@bm-race.com)  
+7-925-682-47-33



# LOGISTIC AND GEOGRAPHY

Our vans and trailers are always ready to bring your bikes to any of the scheduled events. In addition we have a regular run (every 2 months) from Moscow to Valencia and back. We could come to your location along the way to take your stuff

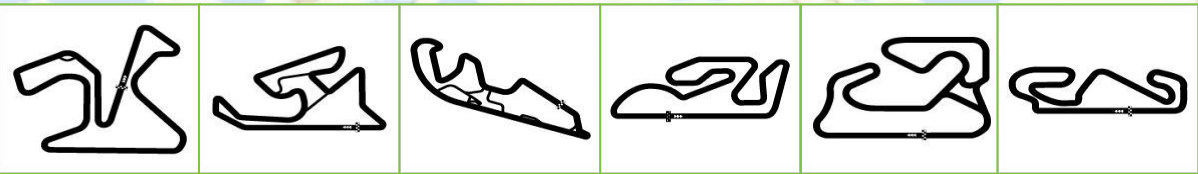


## Our vans:

- Mercedes-Benz Sprinter Classic 311 CDI (brings 4 motorcycles and 3 pilots)
- Nissan NV200 (takes 1 motorcycle and 3 pilots)

## Trailers:

- Covered – for 2 motorcycles
- Open – for 3 motorcycles



JEREZ NAVARRA ARAGON VALENCIA ALBACETE BARCELONA



bm-race.com  
[info@bm-race.com](mailto:info@bm-race.com)  
+7-925-682-47-33

# PARTICIPATION IN COMPETITIONS

We care about our health and the equipment, that's why we work only on the safe tracks. Preferred competitions: championships in Spain (national and regional) with one to three mandatory races in Russia. We set high standards for ourselves, and we do our best to participate in most of the professional motorcycle events

## Team's main races in 2018



**FIM CEV Repsol International Championship**  
7 races + 1 pretest, all the main circuits of Spain, including Aragon, Jerez, Valencia, Barcelona



**Spain's BMW Cup**  
6 cycling days with participation in races on the mains circuits of Spain, official rating in monocup



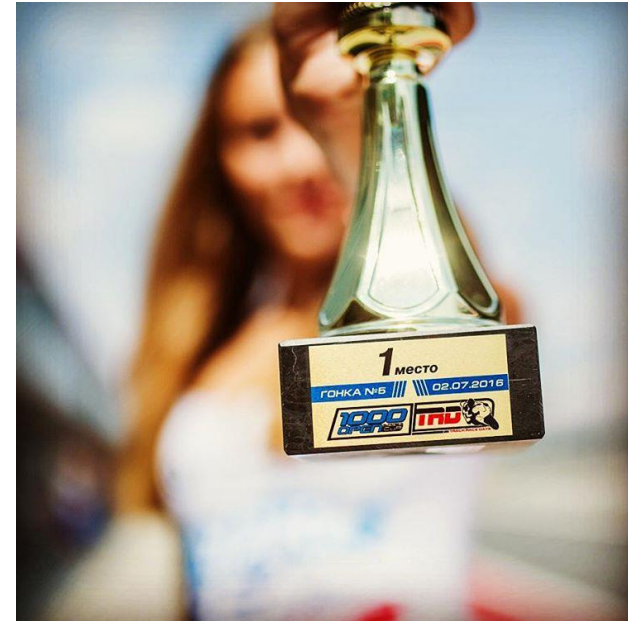
**Valencia championship**  
4 events on the main circuits of the autonomous community of Valencia and near by provinces



**Best Russian organizer of track days**  
In 2018 we will participate in 6 races on Moscow Raceway



**Moscow region Governor's Motorcycle Race Cup**  
The main motorsport event in Russia with participation of the WSBK stars



# EXHIBITIONS AND PUBLIC RELATIONS

We like to promote ourselves as well as meet with our friends not only on the circuits. We have participated in couple of exhibitions in Russia and will continue to do so

In 2017 we have participated in 2 exhibitions in Russia



**Motowinter** – 5<sup>th</sup> international active sports exhibition (Moscow, Russia). Audience: more than 40 000 persons  
<http://motowinter.ru>



**MotorSport Expo 2017** – 2<sup>nd</sup> international racing motorsport exhibition (Moscow, Russia). Audience: more than 10 000 persons  
<http://motorsportexpo.moscow>

Our plans in 2018 to continue to expose ourselves on these exhibitions and explore new exhibitions and motorcycle events in Europe



**BOXESMOTO**  
racing team

bm-race.com  
[info@bm-race.com](mailto:info@bm-race.com)  
+7-925-682-47-33

# PARTNERSHIP AND SPONSORSHIP

We closely cooperate with the suspension supplier **Ohlins** and **FG Gubellini**. Our partners in the area of education are the personnel from the **KSB** motor school, Valencia. For suspension adjustment and prompt solving of technical problems, we also count with the support of telemetry technicians from **2D Spain**. Collaboration with the motor school **Monlau Repsol Technical School** allows us to have the most-up-to-date organizational support.

## Opportunities for partnership

- ✓ **Design of the team's equipment** (motorcycles, vans, trailers), using the partner's brand colors and logos
- ✓ Use of the partners' logos, contact information in **videos** of the team, on the **website**, during **exhibitions**
- ✓ Mentioning of the partner company in **articles**, **web page**, **socials** (Facebook, Instagram) etc.)
  - Total number of subscribers - around **2500** people, interested directly in the topic, motorcycle races, accessories
- ✓ Setup of **banners and flags** of the partner company in the motorcycle workshop and the team's garage
- ✓ Putting of the partner company's logos on **riders' outfit**, **caps**, **shirts** of the technicians and other team members

You could reach us by phone or email:  
[info@bm-race.com](mailto:info@bm-race.com); [info@boxesmoto.com](mailto:info@boxesmoto.com)



Competición



bm-race.com  
[info@bm-race.com](mailto:info@bm-race.com)  
+7-925-682-47-33